

Walton Nurseries Fuchsia Specialist

2011 - 2012 Edition 1

Mail Order Catalogue



Cherry Lane, Lymm,
Warrington, Cheshire,
WA13 0SY

Tel No: +44 (0) 1925 759026

Fax No: +44 (0) 1925 759026

E-mail: info@waltonnurseries.co.uk

Website: www.waltonnurseries.co.uk

Index:

	Page No
TERMS OF BUSINESS	1
VISITING OUR NURSERY	1
OPENING HOURS.....	1
GROUP EVENTS.....	1
CULTURAL HINTS.....	2
USEFUL INFORMATION	2
NEW INTRODUCTIONS FOR 2011	3
SPECIES.....	3
ENCLIANDRA & TYPES	3
TRIPHYLLA	4
HARDY FUCHSIAS	5
HARDY DWARFS COLLECTIONS (9" to 15" High).....	8
<i>Thumb</i>	8
<i>Snow White & The Seven Dwarfs</i>	8
OTHER FUCHSIA COLLECTIONS.....	8
BASKET VARIETIES	9
GENERAL VARIETIES.....	12

**Prices shown are subject to supplier increase
without prior notification.**

TERMS OF BUSINESS

Rooted cuttings by Mail Order are £1.35 each and are subject to availability.

A minimum order of 6 cuttings applies.

Postage and packaging is £3.65 per box (*maximum of 6 cuttings per box*).

Please send Sterling Cheques / Postal Orders with your order made payable to: **R. Walton**

If you require written acknowledgement that we have received your order, please enclose a stamped self addressed envelope with your order.

Only well-rooted cuttings will be dispatched, these are available all year round.

(Please allow 28 days for delivery).

Important Note: Occasionally, delays may occur due to popular varieties being temporarily out of stock, or delays with propagation, and in these circumstances your order may exceed the normal 28 day delivery period, however every effort will be made to expedite your order. Please call the nursery during normal opening hours if you would like to check on the progress of your order.

To avoid delays, we may send you some substitute plants instead, but only if your first choice is out of stock. Please mark your preferred selection of substitute plants on the order form under the heading 'Substitutes'. **Please note that if no substitutes are listed, we will substitute** with a similar variety of our own choice unless you have specifically asked us not to in the 'Special Instruction' section.

Other items available by Mail Order are as follows:

- | | | | |
|---|------------------------------|--------------------|-------------------|
| ➤ | <i>Jiffy 7's 30mm Plugs</i> | <i>Pack of 50</i> | £3.99 + £1.95 P&P |
| | | <i>Pack of 100</i> | £6.49 + £2.50 P&P |
| ➤ | <i>Balanced Fuchsia Feed</i> | <i>1KG Tub</i> | £6.30 + £4.35 P&P |



VISITING OUR NURSERY

During the year we have a selection of plants in 3½" and upwards sized pots. Pots, standards, whips and hanging baskets are available for **collection at the Nursery**. We have extended our stock to include bedding and house plants with some perennials which can vary throughout the year. We also stock compost, plant food and various forms of pest control.

OPENING HOURS

If you would like to visit our Nursery you will be made very welcome. We are generally open from 9.30am until 5.00pm Tuesday to Sunday, **we are closed on Mondays** (with the exception of the spring and summer Bank Holidays when we remain open). In the main growing period from March to September we may open longer hours, however it is **always best to give us a call pending your visit**, especially if you are travelling from afar.

GROUP EVENTS

Our Nursery comprising of approximately 1/3rd of an acre of Fuchsias, has been a success, with many Societies and Groups visiting us by coach. We can arrange a **'Tea, Coffee & Nibbles'** evening for your group amongst the flowers, followed by a presentation / demonstration on the cultivation of Fuchsias. Anyone who makes a purchase will be entered into a free raffle which will be drawn at the end of the evening. If you have a Society or Group of any kind, why not come along - give us a call to make a booking, our **'Tea, Coffee & Nibbles'** evenings are **FREE OF CHARGE!!**

CULTURAL HINTS

You may have grown Fuchsias for many years, or maybe this is your first attempt at growing this wonderful and rewarding plant. We can assure you that once you have mastered the few simple requirements that these plants require, you will become addicted.

When growing any plant, we need to grow as near as nature intended, we therefore need to know a little of where our plants originated. It is thought that the first plant arrived in England around 1788. The Fuchsia species known today mostly came from Central and South America, New Zealand and Tahiti. Wherever the plants are found, the nature of the site is such that the climatic conditions are always cool and moist. All the modern Hybrids have inherited the dislike of a hot, dry atmosphere.

We need to keep the plants cool, not in full sun, but **in a shaded position**. Watering is of the most importance, **keep plants moist not wet**, do not stand in water and only water when necessary. Fuchsias need feeding regularly and a good plant feed - such as "our own" balanced feed (*NPK 18:18:18 + me + 2mg*) given at $\frac{1}{4}$ of the recommended strength at each watering will be all that is required. Hot, dry, sunny conditions result in flower and leaf drop.

On receipt of your new plants, they should be potted into 3½" pots and kept in a warm, lightly shaded position for a few days (**be careful not to over water**). Use a good brand of potting compost, a good mix is 75% Compost and 25% Perlite, this will provide good drainage. (**Do not remove the nets from the plugs**).

To produce lots of flowers and a nice bushy plant, pinch out the growing tips of the plants at least 2 - 3 times.

If you require any further assistance with your Fuchsia plants, please give us a call, e-mail or write to the address overleaf, we would love to hear from you. (*Please note that our e-mail is managed by a 3rd party, so there may occasionally be a delay in responding to you*).

We hope your plants give you many happy hours.



Roy & Lesley

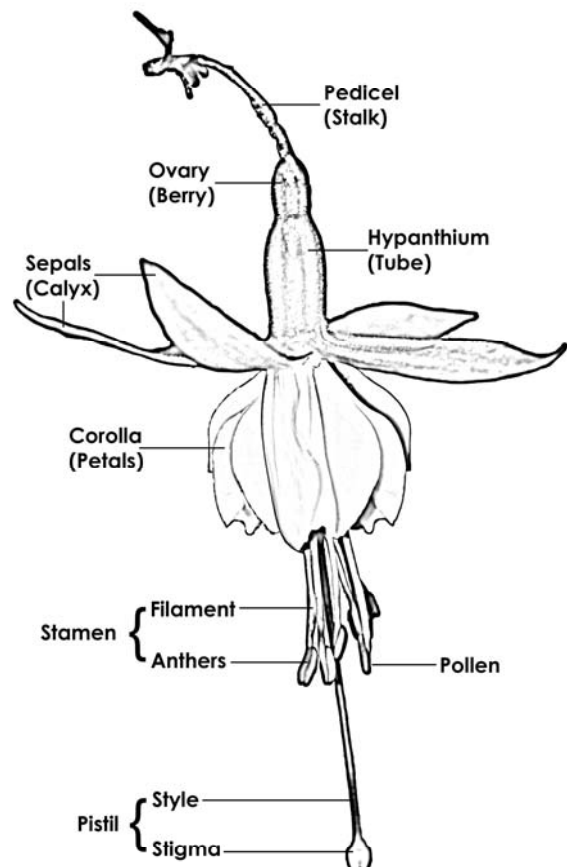
USEFUL INFORMATION

Fuchsia Flowers

Single Flower	-	4 petals
Semi-Double	-	5, 6 or 7 petals
Double	-	8 or more petals
Triphylla	-	usually have long tubes, short sepals and a small single corolla

Key to our catalogue

(T) = Tube
(S) = Sepals
(C) = Corolla



NEW INTRODUCTIONS FOR 2011

None at time of printing - please check our website throughout the year for updates.

SPECIES

'Species' fuchsias are the plants that are found growing in the wild naturally, and from where all of today's modern cultivars are descended. They can be found growing wild in the mountainous areas of South and Central America, Mexico, Tahiti and New Zealand.

Plant Name	Hybridised By:	Description	Sepals & Corolla
F. BOLIVIANA	Carriere Bolivin (1876)	Single. Need large pot. Long funnel shaped tube.	(S) Light red to deep crimson (C) Light red to deep crimson
F. BOLIVIANA ALBA		Single. Same as Boliviana but with white tube and sepals.	(S) White (C) Red
F. DENTICULATA	Ruiz & Povon (1802)	Good colour combination.	(S) Pink (C) Scarlet/orange
F. FULGENS RUBRA GRANDIFLORA	H Cannell (1882)	Long clusters of orange flowers with green tips - large leaves.	(S) Pale red, yellow -green tips (C) Bright red
F. PROCUMBENS		Single. Trailing habit. Stamens bear bright blue pollen trailing tiny flowers. Plumb like berries.	(S) Green tipped purple (C) None
FIRST SUCCESS	Weeda (1983)	Single flowers in loose panicles. Very vigorous plant. (F.Paniculata x F.Spendens).	(S) Light pink (C) Pink
LECHLADE GORGON		Hybrid. Lilac flowers.	(S) Rosy purple (C) Pale mauve
MARTIN'S YELLOW SURPRISE	Beige (1994)	Long tubes, coloured light pink to green.	(S & C) Flowers with greenish tinge in good light, darkens to orange.
F. PANICULATA	Lindley (1856)	Small lilac flower.	(S) Rosy purple (C) Lavender
F. SPLENDENS		Single.	(S) Red (C) Green-red
TARRA VALLEY		Single.	(T) Green with purple-red shade (S) Green (C) Dark red-brown
TRIENTJE	Bogemann (1992)	Single (Paniculata type).	(S) Lavender (C) Lavender, with age - blue cast
WHITE CLOVE		Very small flowers.	(S) White (C) White

ENCLIANDRA & TYPES

Encliandras originate from Central America, where they are found high in the tropical rain forest. The name is Greek and it means "enclosed male", because only four stamens protrude beyond the rim of the tube, instead of the usual eight. The other four are found within the tube itself.

Encliandra Fuchsias have small flowers and leaves, which make them ideal for growing as Bonsai.

Plant Name	Hybridised By:	Description	Sepals & Corolla
KAREN ISLES		Single, small leaf & flowers.	(T) Pink (S) Pink (C) Pink
KATINRA		Single, tiny flowers.	(S) (C)
LOTTIE HOBBY	Edwards (1839)	Tiny flowers held erect. Growth upright to 14".	(S) Crimson (C) Dark crimson

TRIPHYLLA

A triphylla is usually recognisable because it has a longer tube than the more commonly cultivated type of fuchsia. Most of them are more sun tolerant and they will withstand much higher temperatures than other varieties of fuchsias, however as they are derived from the sub tropical regions, they will require extra attention during the colder weather.



The name triphylla basically means three leaved. Tri meaning three and phyllon is Greek for leaf, hence this type of fuchsia has leaves in sets of three at each set of nodes instead of only two as found normally on the basic cultivar.

Not all the long tube fuchsias are classed as triphyllas, because of previous cross breeding with other varieties, the resultant plants although retaining the long tube and flower appearance of triphyllas, are now known as triphylla variants.

Plant Name	Hybridised By:	Description	Sepals & Corolla
ANDENKEN AN HEINRICH HENKEL	Rehnelt (1897)	Single. Dark reddish-green foliage.	(S) Rosy crimson flushed cinnabar (C) Bright crimson
BILLY GREEN	Engels (1966)	Single lax. Triphylla type flowers though not terminal	(S) Pinkish-salmon self (C) Pinkish-salmon
BORNEMANS BESTE	Bonstedt (1904)	Single, bush.	(S) Rose red (C) Orange
BRIGHTON BELLE	Goulding (1985)	Medium.	(S) Rosy pink flowers (C)
CATHARINA			(S) (C)
CHANNY PARK	Stannard (1993)	Lax growth and fully terminal flowering.	(S) Bright scarlet flowers (C)
ELFRIEDE OTT	Nutzinger (1976)	Semi-double.	(S) Salmon pink (C) Salmon pink
ELMA		Single.	(T) Ruby red (S) Ruby red (C) Oxblood red with green tips
FABIAN FRANCK		Single. Semi trailer.	(T) Candy pink (S) Deep carmine / pink (C) Tomato red
FANFARE	Reiter USA (1941)	Single.	(S) Coral - pink carmine stripes (C) Shiny deep coral pink
FUJI SAN			(S) (C)
FULGENS VERIEGATA		Single.	(S) Pale Red (C) Bright Red
GEORGE BORNEMANN	Bonstedt (1915)	Medium single.	(S) Salmon pink (C) Salmon pink
GOLDEN ARROW		Long single flower.	(S) Orange-green / tangerine flowers (C)
HIROSHIGE			(S) (C)
INSULINDE	De Graffe (1991)	Single. Bronzy green foliage with long orange tube.	(S) Orange (C) Orange
JACKQUELINE	Oxtoby (1987)	Dark velvety green foliage. Easy grower. Takes full sun.	(S) Blood red including tube (C) Mandarin red with copper brown edges
JOHN MAYNARD SCALES		Medium.	(S) Bright orange flowers (C)
KORALLE	Bonstedt (1906)	Single. Upright growth. Vigorous. Blue-green leaves velvety appearance	(S) Salmon-orange (C) Salmon-orange
LEVERKUSEN	Hartnauer (1928)	Single.	(S) Rosy cerise (C) Rosy cerise
MANTILLA	Reiter (1948)	Single - Good basket. Deep carmine self. Long tube flowers up to 3½". Shiny bronze foliage.	(S) Deep carmine flowers (C) Carmine
MAORI PIPES	De Graaff (1987)	Single.	(S) Magenta rose upper, ruby red lower (C) Ox blood red
MARY	Bonstedt (1897)	Single. Sage green foliage veined purple. Velvety texture. Needs warmth, do not over pot or water.	(S) Bright crimson self (C) Crimson
ORIENT EXPRESS	Goulding (1985)	Single.	(S) palest pink lined with deep pink (C) Rose pink with fluted petals
PETER CROOKS		Medium - Trailer. Red and orange-red	(S) Red (C) Intensive orange/red
PROFESSOR HENKEL			(S) Orange Red (C) Red
ROOS BREYTENBACH	Stannard (1993)	Orange red self. Long tube. Small sepals and corolla.	(S) Orange / red (C) Orange / red self
SPACE SHUTTLE		Single.	(T) Soft red (S) Light Green at base / soft red (C) Pale yellow upper, orange base and veins
SPARKY	Webb (1994)	Small plant, small flowers held semi-erect, bronze foliage.	(S & C) Purple flowers

Plant Name	Hybridised By:	Description	Sepals & Corolla
STELLA ANN	Dunnett (1974)	Single.	(S) Chinese-coral tipped green (C) Indian orange
THALIA	Turner (1855)	Good show bench plant. Rich scarlet-orange with dark foliage.	(S) Scarlet/orange flowers (C) Scarlet/orange flowers
TRAUDCHEN BONSTEDT	Bonstedt (1905)	Light green foliage flushed bronze. Long tube creamy and pale salmon self.	(S & C) Pale salmon flowers.
TRIENTJE	Bogemann (1992)	Single (paniculate type)	(S & C) Lavender with age blue cast
TRUMPETER	Reiter (1946)	Long flowers. Growth trailer. Makes a good basket.	(S) Pale geranium like self (C) Slightly darker
VIRGINIA CURRYER			(S) (C)
WALTZ LUCIFER	Waldenmaier (1991)	Single.	(S) Tube & Sepals Pink (C) Bright Orange
WHITEKNIGHT'S CHEEKY		Small single. Dark purple flowers.	(S) Dark purple (C) Dark purple
WHITEKNIGHT'S RUBY	Wright (1976)	Small flowers.	(S) Ruby (C) Ruby
YMJE	Van Dem Berg (1994)	Heavy flowering terminal clusters - long thin flower, light pink with a touch of orange.	(S) Light pink with a touch of orange flowers (C) Yellow-green

HARDY FUCHSIAS

The Fuchsias' listed in this section should prove to be hardy in most areas. We recommend for the best results that they are planted out in June to give them sufficient time to establish before winter. These plants are not hardy when grown as standards or in pots or containers.

Plant Name	Hybridised By:	Description	Sepals & Corolla
ACHIEVMENT	Melville (1886)	Single.	(S) Reddish-cerise (C) Reddish-purple
ALICE HOFFMAN	Klese (1911)	Semi-double. Bronze green foliage. Height 20".	(S) Rose and tube (C) Pink, lightly veined red
ANNABEL	Ryle (1977)	Double.	(S) White flushed pink (C) Creamy white
ARMY NURSE	Hodges USA (1947)	Semi-double. Height 36".	(S) Deep carmine (C) Bluish violet
BARBARA	Trolley (1973)	Single. Growth vigorous.	(S) Pale pink (C) Cherry and tangerine pink
BEACON	Bull	Single.	(S) Deep Pink (C) Bright Mauve Pink
BEACON ROSA	Burgi-Ott (1972)	Medium single. Height 18".	(S) Pinkish red (C) Pink, lightly veined red
BEAUTY OF CLIFF HALL			(S) (C)
BELLA FORBES	Hawick / Forbes	Double.	(S) Deep pink (C) Violet purple
BENJAMMIN	Carless (1995)	Single. Small flowers.	(S) Pinky aubergine (C) Aubergine
BLUE BUSH	Gadsby (1973)	Single Medium. Height 3 to 4 ft. Suitable for hedging. Show bench hardy.	(S) Rose red (C) Bluebird fading to violet with rose veins
BRILLIANT	Bull (1865)	Single medium flowers. Growth vigorous. Height 30".	(S) Scarlet (C) Violet magenta
BRUTUS	Lemoine (1897)	Single. Early flowering. Height 3ft.	(S) Tubes & sepals rich cerise (C) Rich dark purple
CALEDONIA	Lemoine (1899)	Single.	(S) Cerise pink (C) Crimson
CARDINAL FARGES	Rawlins (1958)	Semi double. Height 15".	(S) Pale cerise (C) White, lightly veined cerise
CHARMING	Lye (1877)	Medium Single. Height 30".	(S) Reddish-cerise (C) Rosy-purple
CHILLERTON BEAUTY	Bass (1847)	Small single. Height 36".	(S) Pale rose pink (C) Mauvish violet veined pink
CHINA LANTEN	Unknown	Single.	(S) White tipped green (C) Rosy pink
CHRISTINE BAMFORD		Single.	(S) Light red (C) Pink
CLOTH OF GOLD	Stafford (1863)	Single. Foliage golden yellow-green.	(S) Red (C) Purple
CONSPICUA	G. Smith (1863)	Single. Height 24".	(S) Bright scarlet (C) White veined scarlet
CONSTANCE	Berkeley (1935)	Double. Very free. Height 18".	(S) Soft pink (C) Bluish mauve with pink tinge
CORALLINA	Pince (1844)	Single. Height 24".	(S) Scarlet (C) Rich purple

Plant Name	Hybridised By:	Description	Sepals & Corolla
DAVID FOSTER	Foster (1998)	Semi double. Trailer	(S) Light pink (C) Light purple
DISPLAY	Smith (1881)	Single. Early flowering. Excellent standard. Height 18".	(S) Rose pink (C) Deeper pink
DOLLAR PRINCESS	Lemoine (1912)	Full double. Flowers small to medium. Darkish green foliage. Good bush. Makes good standard.	(S) Cerise (C) Rich purple
DOROTHY HANLEY		Semi double. Height 30".	(S) Dark Red (C) Aubergine
DRAME		Single.	(S) Scarlet (C) Purple
EMPRESS OF PRUSSIA	Hoppe (1868)	Single. Height 36". 6-8 blooms at each joint.	(S) Scarlet (C) Reddish-magenta pale base
ERNIE BROMLEY	Goulding (1988)	Single. Medium bell shaped flowers. Very free. Garden foliage to 3ft.	(S) Tube and sepals pink (C) Deep violet
F. MAGELLANICA (ALBA)		Small single. Height 24".	(S) White (C) Flushed pink
F. MAGELLANICA (GRACILLIS)		Height 48".	(S) Red (C) Purple
F. MAGELLANICA (RICCARTONII)	Young (1833)	Species variant. Height 4 to 5 ft. Large bush, very hardy ideal for hedgerows.	(S) Bright red flowers (C)
FLASH	Hazard & Hazard USA (1930)	Single.	(S) Red (C) Red
FLYING CLOUD	Reiter (1949)	Double large and free.	(S) White tipped green. Faint pink underneath (C) White touched pink at base
GARDEN NEWS	Handley (1978)	Large double. Mid-green foliage. Lightly separated. Height 2ft.	(S) Pink (C) Magenta rose - Base rose pink
GENERAL MONK			(s) (c)
GENII	Reiter (1951)	Single small flowers. Free flowering. Foliage yellowish green. Red stems. Height 24".	(S) Cerise (C) Rich violet with pink base and cerise vein
GOLD BROCADE	Tabraham (1976)	Single. Foliage Variegated. Height 24".	(S) Red (C) Mauve
GOLD BROCADE	Tabraham (1976)	Single. Foliage Variegated. Height 24".	(S) Red (C) Mauve
GRAF WITTE	Lemoine (1899)	Small single. Height 36".	(S) Carmine (C) Purple
HAWKSHEAD	Travis (1962)	Single. Hardy substitute for Snow White.	(S) White (C) White
HEATHFIELD	St Agnes Gardens (1970)	Double.	(S) Pink (C) Purple
HEIDI ANN	Smith (1970)	Medium double. Very free. Height 18".	(S) Crimson (C) Bright lilac, veined cerise
HEIDI ANN WHITE		Medium double. Height 18".	(S) Crimson (C) White
HERALD	Sandkey (1887)	Medium single. Height 24".	(S) Scarlet (C) Deep purple
HOWLETTS HARDY	Howlett (1952)	Large single. Height 18".	(S) Scarlet (C) Violet-purple - veined scarlet
JENNIFER LISTER	Johns (1998)	Medium sized semi-double. Short tube and upswept sepals.	(S) White flushed pink tipped green (C) Deep red shading to white at base.
JOAN COOPER	Wood (1964)	Single. Height 18".	(S) Pale rose-opal (C) Cherry red
LENA	Bunney (1862)	Medium semi-double. Height 18".	(S) Pale flesh pink (C) Rose magenta
LENA DALTON	Reimers (1953)	Double.	(S) Pale pink (C) Blue
LITTLE BEAUTY	Unknown	Single. Upright and compact growth.	(S) Flesh pink (C) Lavender blue
LOTTIE HOBBY	Edwards (1839)	Tiny flowers held erect. Growth upright to 3ft.	(S) Crimson (C) Dark crimson
MADAME CORNELISSEN	Cornelissen Belgium (1860)	Semi double. Height 24".	(S) Rich scarlet (C) White
MARGARET	Wood (1937)	Medium semi-double. Height 36". Suitable for a hedge.	(S) Carmine scarlet (C) Violet veined cerise
MARGARET BROWN	Wood (1949)	Small single. 2ft to 3ft Lightish green foliage.	(S) Rose pink (C) Light rose Bengal
MAUVE BEAUTY	Banks (1869)	Medium double. Height 30".	(S) Cerise (C) Opens violet purple with red vein
MERLIN	Adams (1982)	Single, upright.	(S) Bright red (C) Deep purple
MISCHIEF	Tabraham (1985)	Single. Height 18".	(S) Pink (C) Mauve fades to pink
MISSION BELLS	Walker & Jones USA (1948)	Single. Height 18".	(S) Scarlet (C) Rich purple
MRS POPPLE	Elliot (1899)	Single. Free and vigorous, makes good hedge. Approximately 3ft.	(S) Scarlet (C) Purple violet, veined cerise
MRS W CASTLE		Single. Height 24".	(S) Scarlet (C) Pink mauve
MRS W P WOOD	Wood UK (1949)	Single. Height 36"	(S) Pale pink (C) Pale Pink
NICOLA JANE	Dawson (1959)	Double medium flower. Height 18".	(S) Cerise pink (C) Bluish pink
OLYMPICS SUNSET	Woods	Single upright.	(S) Aubergine (C) Aubergine

Plant Name	Hybridised By:	Description	Sepals & Corolla
ORANGE CRYSTAL	Hadley (1980)	Medium single.	(S) Orange tipped green (C) Deeper orange
PHYLLIS	Lemoine (1905)	Semi-double. Height 24".	(S) Waxy rose (C) Rosy cerise
PIPER	Howarth (1985)	Medium double.	(S) White with red line on edge (C) White
PIXIE	Russell (1960)	Single medium flower. Foliage yellowish green, crimson veins. Height 3ft.	(S) Pale cerise (C) Rosy mauve veined carmine
PRESTON GUILD	Thornley (1971)	Single. Height 18" - 2ft.	(S) Pure white (C) Violet Blue
PRODIGY		Semi-double. Height 24".	(S) Crimson (C) Bluish purple
QUERY		Single. Height 24".	(S) White edged rose (C) Mauvish
ROSE OF CASTILE	Banks (1869)	Single. Height 18".	(S) Waxy white tipped green, flush pink (C) Purple flushed rose, white base
ROSE OF DENMARK	Banks (1864)	Medium single. Height 18".	(S) White blushed pink (C) Opens pale rose lavender, matures to rose pink whitish base pink vein
RUFUS	Nelson (1952)	Large single. Vigorous, Height 3ft.	(S) Turkey red (C) Turkey red
SANTA CRUZ	Tiret (1947)	Semi double.	(S) Deep crimson (C) Deep crimson
SATURNUS	De Groot (1970)	Single.	(S) Red (C) Lilac
SEALAND PRINCE	Walker - Bees UK (1967)	Single. Height up to 5ft / 1.7m.	(S) Red long upturned (C) Violet purple
SHARPITOR		Single.	(S) Tube and sepals pale mauve (C) Pink - foliage cream and pale green
SNOWCAP	Henderson Circa (1880)	Semi-double. Vigorous. Show bench winner. Mid green foliage. Good standard. Height 2ft.	(S) Bright red (C) White veined cerise
STAR WARS	R Sinton (2002)	Single.	(S) White (C) Violet
SUSAN GREEN		Single.	(S) White to pale pink with green tips (C) Rosy pink edged dark rose
TENNESSEE WALTZ	Walker & Jones (1951)	Semi-double. Medium size flowers. Very free. Medium green foliage. Makes good standard.	(S) Rose madder (C) Lilac/lavender rose
TRASE	Dawson (1959)	Medium semi-double. Height 18".	(S) Carmine-cerise (C) White veined and flushed carmine-cerise
VERSCOLOUR		Single. Variegated leaf.	(S) Red (C) Purple
WATER NYMPH		Single. Early flowering.	(S) Very pale pink (C) Salmon orange - orange
WAVENEY SUNRISE	Burns (1986)	Single medium flowers. Bright yellow foliage with red veins on young growth.	(S) Pale pink tipped green and upturned (C) Bright red
WHITE KNIGHTS BLUSH	Wright (1980)	Single. Height 2ft. Similar to White Knights Pearl.	(S) Pale pink (C) Small flowers
WHITE PIXIE	Merrist-Wood (1968)	Single. Small flowers.	(S) Reddish carmine (C) White veined pink
WICKED QUEEN	Tabraham (1985)	Large double. Height 24". Dark green foliage.	(S) Dark Red (C) Deep purple splashed pink

HARDY DWARFS COLLECTIONS (9" to 15" High)

Thumb

Plant Name	Hybridised By:	Description	Sepals & Corolla
TOM THUMB	Baudinat (1950)	Single.	(S) Carmine (C) Mauve veined carmine
SON OF THUMB	Cubler (1978)	Single.	(S) Cerise (C) Lilac
LADY THUMB	Roe (1966)	Semi-double.	(S) Reddish light carmine (C) White veined carmine



Snow White & The Seven Dwarfs

Plant Name	Hybridised By:	Description	Sepals & Corolla
BASHFUL	Tabraham (1974)	Double. Very free deep green foliage.	(S) Deep pink (C) White with red veins
DOC	Tabraham (1974)	Single. Extremely free.	(S) Red (C) Pale purple
DOPEY	Tabraham (1974)	Double.	(S) Red (C) Purple tinged pink
GRUMPY	Tabraham (1974)	Single.	(S) Deep pink (C) Navy blue
HAPPY	Tabraham (1974)	Single. Very free pale green foliage.	(S) Red (C) Blue
SLEEPY	Tabraham (1954)	Single.	(S) Pale pink (C) Lavender blue
SNEEZY	Tabraham (1974)	Single. Very free.	(S) Red (C) Deep blue/lavender
SNOW WHITE **	Dunnett (1982)	Double. Mid green foliage. Growth - Natural trailer.	(S) White tipped green (C) White
WICKED QUEEN **	Tabraham (1985)	Large double. Height 24". Dark green foliage	(S) Dark Red (C) Deep purple splashed pink

SPECIAL OFFER 1 - Snow White & The Seven Dwarfs Collection (9 Plants) - £18.00 Inclusive of P&P

SPECIAL OFFER 2 - Both Collections (Thumb / Snow White & Seven Dwarfs - 12 Plants) - £21.00 Inclusive of P&P

OTHER FUCHSIA COLLECTIONS

Save money by choosing one of our own collections.

We select healthy cuttings of our own choice from available stock and make up a collection of plants for you. We choose which plants, you just need to decide how many you would like (12 or 24) and for what purpose (Basket, Bush or Hardy).

Name	Description	Price (Inc. P&P)
COLLECTION (A)	12 different rooted cuttings, suitable for hanging pots or baskets.	£21.00
COLLECTION (B)	24 different rooted cuttings, suitable for hanging pots or baskets.	£42.00
COLLECTION (C)	12 different rooted cuttings, suitable for pots and patio container work.	£21.00
COLLECTION (D)	24 different rooted cuttings suitable for pots and patio container work.	£42.00
COLLECTION (E)	12 different rooted cuttings of hardy varieties.	£21.00
COLLECTION (F)	24 different rooted cuttings of hardy varieties.	£42.00

BASKET VARIETIES

Plant Name	Hybridised By:	Description	Sepals & Corolla
ADRIENNE	(Sinton) 2002	Double.	(S) Large broad sepals, rose red (C) Violet
ALADNA'S SANDER		Double.	(S) White/Rose (C) Reddish Purple
ALICE KENNEDY			
ANGELA	(1970)	Double.	(S) Deep pink (C) Pale pink
ANNA OF LONGLEAT	Klese Germany (1911)	Semi-double.	(S) Shell pink (C) Bright lavender
APPLAUSE	Stubbs (1978)	Double. Broad sepals.	(S) Carmine including tube (C) Deep orange red
ARCADIA	Tolley / Fuchsiavale (1979)	Single, upright. Large flowers.	(S) Cerise (C) Magenta
AUNTIE JINKS	Wilson (1970)	Single. Very floriferous. Small mid-green foliage.	(S) White edged cerise (C) Purple
BARBARA SMYTH	J Norcross (2007)	Single.	(S) (C)
BEAUTIFUL DREAMER	Sinton		(S) (C)
BEAUTY OF TROWBRIDGE	James Lye's	Single.	(S) Creamy white - waxy (C) Rose cerise
BELLA ROSELLA	Garrett (1989)	Large double. Fully flared.	(S) Peachy pink upward flaring (C) Pinkish purple
BIANCA		Double.	(S) White (C) White
BICENTENNIAL	Paskesen (1976)	Double.	(S) Salmon (C) Orange
BITTERSWEET	Kennett (1971)	Large double.	(S) Pale pink and white (C) Rose with salmon to orange marbling
BLACKY		Semi double.	(S) Dark red (C) Black
BLAZEAWAY	Sinton (1995)	Double.	(S) Vermilion red (C) Vermilion red
BLOWICK	Porter (1984)	Single. Medium flowers.	(S) Tube & sepals pinkish-white (C) Mallow purple
BLUE EYES	Reedstrom (1954)	Double.	(S) Sepal and tube pale pink (C) Bright blue
BLUE VEIL	Pacey (1980)	Double.	(S) White including tube (C) Lobelia blue
BURGUNDY VELVET	Alan Swaby	Single.	(S) Pink magenta underside (C) Dark purple
CARILLON VAN AMSTERDAM		Single.	(S) Red (C) Dark red
CARNIVAL	(1956)	Double.	(S) White (C) Red - very long
CASCADE	Lagen (1937)	Single. Natural trailer.	(S) White flushed carmine (C) Deep carmine
CECILE	Whitfield (1981)	Double.	(T) Pale pink (S) Deep pink rose with green tips (C) Soft lavender-blue
CHARLIE DIMMOCK		Large double.	(S) Rose pink (C) Mid blue
CIRCUS SPANGLES		Large double.	(S) White reflexed (C) Hot pink streaked white
CLAIR DE LUNE		Single.	(S) Apricot / orange (C) Salmon / orange
CLAUDIA	Sinton (2000)	Double.	(S) Rose (C) Light Rose
CLIANTHIA	Strumper (1989)	Medium double.	(S) Tube & sepals Greenish Pink (C) Magenta maturing lighter
COACHMAN	Bright (1910)	Medium single. Good half basket.	(S) Pale salmon (C) Rich orange-vermili
DAISY BELL	Unknown	Single small flower. Makes very good basket. Small medium green foliage. Vigorous.	(S) Pale orange shading to apple green at tip (C) Vermilion shading pale orange at base
DANCING FLAME	Stubbs (1981)	Double.	(S) Orange including tube (C) Orange-carmine marbling with flaring petals
DARK EYES	Erickson (1958)	Double.	(S) Deep red (C) Deep violet blue
DEEP PURPLE	Nix Nursery (1988)	Large semi-double.	(S) Pure white flared (C) Velvet royal purple
DEVONSHIRE DUMPLING	Pacey (1986)	Large double.	(S) Neyron-rose tipped green (C) White outer petals flush pink
EUREKA RED	Stubbs (1991)	Large double.	(S) Rose-red (C) Violet-pink
EVA BOERG	Yorke (1943)	Semi-double. Free flowering.	(S) White including tube (C) Pinkish purple, lighter at the base
FEY	(1970)	Large double.	(S) White (C) Lilac
FRANK UNSWORTH	D Clark (1982)	Double.	(T&S) White recurved with green tips (C) White slightly flushed with pink

Plant Name	Hybridised By:	Description	Sepals & Corolla
FROSTED FLAME	Handley UK (1975)	Single.	(S) White (C) Bright flame
GLORIA JOHNSON		Single.	(S) Pale pink (C) Bright orange rose
GOLDEN GIRL	Pearson (1998)	Single. Gold yellow foliage.	(S) Neyron rose (C) Violet to imperial purple
GRANDMA SINTON	Sinton (1986)	Double. Medium flowers. Makes good basket or weeping standard.	(S) White with splash of red near tube (C) Soft shell pink.
HAPPY BIRTHDAY	R Walton (2007)	Double. Medium flowers.	(S) Waxy white flush pink with light green tips (C) Pink
HAPPY WEDDING DAY	Richardson (1985)	Double.	(S) Tube and sepals white, striped rose-bengal (C) White
HARRY GRAY	Dunnnett (1981)	Double.	(S) White tipped green including tube (C) White shading to light pink
HAZEL	Richardson (1985)	Large double.	(S) Neyron rose (C) Violet and rose
HELENA	Steevens (1968)	Double bush variety.	(S) Pale pink (C) Creamy white veined pink
HERMIENA	Van Lavieren (1987)	Single.	(S) White (C) Violet
HOLLY'S BEAUTY	Garrett (1989)	Large double.	(S) White (C) Lilac
HULA GIRL	Paskeson (1972)	Double. Heavy bloomer, natural trailer.	(S) Deep rose pink (C) White shaded pink
HUNTSMAN	(1993)	Double.	(S) Dark rose (C) Purple
INDEPENDENCE	Stubbs (1976)	Large double.	(S) White pink (C) Currant red
IRENE SINTON			(S) (C)
JACK SHAHAN	Tiret U.S.A (1948)	Single. Vigorous. Largish flowers. Good basket	(S) Rose Bengal including tube (C) Rose pink
JEAN TAYLOR	Sinton	Double.	(S) Rose red (C) Lilac blue
KATY ELIZABETH ANN	David Clarke	Small Double.	(S) White flushed Rose (C) Shell Pink flushed Rose
KEGWORTH CARNIVAL	Smith (1978)	Double.	(S) White (C) Tyrian Purple
KIT OXTOBY	Bielby / Oxtoby (1990)	Medium double.	(S) Tube and half up sepals are neyron-rose (C) Rose pink with darker picotee edge
LA CAMPANELLA (PINK)		Small semi-double.	(S) Pink (C) Pale Pink
LADY IN GREY	Lockerbie (1960)	Large double.	(S) Tube & sepals white (C) Silver-Blue
LADY PATRICIA MOUNTBATTEN	Clerk (1985)	Medium single.	(S) Whitish-pink (C) Light Lilac
LAND VAN BEVEREN	Saintenoy (1990)	Single. Free flowering.	(S) White including tube (C) Carmine
LAURA COPPLE	J Norcross (2007)	Single.	(S) Rose pink (C) Dark lilac with rose flash
LAUREN	Sinton (2007)	Semi double.	(S) Blush pink (C) Blush pink
LYNNE SWABY	Alan Swaby	Double.	(S) Pale pink (C) Violet blue maturing light violet
MANCUNIAN	Goulding (1985)	Double.	(T&S) White turning red with maturity (C) White with pink veining
MARCUS GRAHAM	Stubbs (1985)	Large double.	(S) Dusky pink (C) Dusky pink streaked pale orange maturing to dusky pink
MARGARET TEBBIT	A Dyos (1993)	Double.	(S) White with a hint of pink (C) White
MAY TIME	Tiret (1965)	Double.	(S) Rosy pink (C) Lilac
MELTING MOMENTS	John Brough (1980)	Double.	(S) Pale pink (C) White / Pink streaks
MISS CALIFORNIA	Hodges (1950)	Semi-double.	(S) Pink (C) White veined pink
MISS DEBBIE		Double.	(S) Pale pink (C) Orchid pink
MOOD INDIGO	De Graff (1987)	Double.	(S) Yellowish-green (C) Purple, pink base
MOONBEAM	Hall (1982)	Large double.	(S) Pale pink upper surface, crepe textured darker pink underneath (C) White with pale pink splashes and veining at base
MR W. RUNDLE		Single.	(S) Creamy white (C) Rosy cerise
MRS MARSHALL	Jones (1862)	Single bush variety.	(S) Creamy white (C) Rose cerise
MULTA		Small single.	(S) Red (C) Blue purple
NATASHA SINTON	Sinton (1990)	Double. Free flowering.	(S) Orchid pink tipped green including tube (C) Orchid pink with red veins
NORCROSS		Single.	(S) (C)
NORTHWAY		Single.	(T&S) Glossy bright pink with veins (C) Red

Plant Name	Hybridised By:	Description	Sepals & Corolla
ORANGE DROPS	Martin (1963)	Medium single, semi-trailer.	(S) Light orange (C) Darker orange
ORANGE MIRAGE	Tiret (1970)	Single.	(S) Salmon (C) Smokey orange
ORANGE QUEEN	Jones (1960)	Single.	(S) White (C) Rose
ORIENTAL SUNRISE	Soo Yun (1975)	Single.	(S) Light orange tipped green (C) Dark orange
PALM SPRINGS			(S) (C)
PEACHY		Double.	(S) Light rose (C) Light violet
PEPPERMINT CANDY	Garrett (1989)	Large double.	(S) Salmon pink (C) Dark rose
PINK GALORE	Fuchsia-La (1958)	Double.	(S) Pink (C) Candy pink
PINK PANTHER	Bielby/Oxtoby (1987)	Semi-double. Early flowering. Self-branching.	(S) Neyron-rose (C) Neyron-rose
PINK RAIN	H J De Graaff (1987)	Single. Makes good small basket.	(S) Neyron-rose (C) Mallow-purple
POPSIE GIRL	Dowell (1990)	Single. Foliage cream, grey-green & pink.	(S) Light orange (C) Deep orange
POSTILJON	Van Der Post (1987)	Medium single.	(S) Honeysuckle upper, neyron-rose lower (C) Magenta maturing to dark mallow purple
PRESIDENT MARGARET SLATER	Taylor (1973)	Single medium flowers. Very free, dark green foliage.	(S) White flush deep salmon pink, tipped green (C) Mauve-pink overlaid deep salmon
PRESIDENT NORMAN HOBBS	VBielby-Oxtoby (1990)	Large single.	(S) Pale salmon tube and sepals (C) Deep orange red with lighter base
PUTSFOLLY		Single.	(T) Orange / pin darker strips (S) White with green shading (C) Lilac pink
QUASAR	Walker (1974)	Large double.	(S) White (C) Dauphins-violet with white mixed at base
RACHEL SINTON	Sinton (1995)	Double.	(S) Red (C) Pale pink
RASCAL	Jim Foster (1999)	Medium semi-double.	(S) Crepe Pink with Red tube (C) Violet Blush Pink maturing to light violet blush pink petaloids are violet veined pink
RED RAIN			
RED SPIDER	Reiter (1946)	Single. Makes good basket.	(S) Deep crimson (C) Deep rose madder veined / marinade deep crimson
ROCKET FIRE	Garrett (1989)	Large double.	(S) Fiery red (C) Violet blue
ROSE MARIE			(S) Pink (C) Lighter Pink
ROYAL MOSAIC	Garrett (1989)	Large double.	(S) Pink (C) Violet marbled pink
RUBY WEDDING		Double.	(S) Crimson (C) Crimson
RUTH KING	Tiret (1967)	Large double. Free flowering.	(S) Pink including tube (C) Lilac and white
SALMON CASCADE	Bielby-Oxtoby (1991)	Single.	(S) Pale pink (C) Deep orange
SANTA MONICA			
SEVENTH HEAVEN	Stubbs (1981)	Large double.	(S) White ageing to pink (C) Orange red
SHOW OFF	Sinton (2008)	Semi double.	(S) Rose pink (C) Violet
SILVIA BARKER	Barker (1973)	Small single.	(S) Tube and sepals waxy white (C) Scarlet to orange
SIR MATT BUSBY		Medium double.	(S) Red (C) White
SNOW BURNER	Lockerbie (1975)	Large double.	(S) Red (C) White
SNOW WHITE	Dunnett (1982)	Double (Not Hardy) Mid green foliage. Growth - Natural trailer.	(S) White tipped green (C) White
SOPHISTICATED LADY	Martin (1964)	Double.	(S) Pale Pink (C) White
SOUTHGATE	Walker & Jones (1951)	Double.	(S) Pale pink (C) Pale pink with deeper pink veins
STANLEY CASH	Pennisi (1970)	Double. Large flowers and free.	(S) White tipped green (C) Deep royal-purple
STRAWBERRY DAIQURI		Semi-double.	(S) Rose (C) Deep Rose
SUNSET BOULEVARD		Double.	(S) Deep red (C) Purple-burgundy
SWINGTIME	Tiret (1950)	Large double. Vigorous. Good basket.	(S) Deep red including tube (C) White with pink veins
TIME AFTER TIME	Sinton (2006)	Single.	(S) Rose pink (C) Pale pink
TOM WEST		Single. Grown for foliage, cream, green & cerise.	(S) Flowers red & purple (C)
TRAIL BLAZER	Reiter (1951)	Double.	(S) Pale magenta (C) Dark magenta

Plant Name	Hybridised By:	Description	Sepals & Corolla
TRUDIE DAVRO			(S) White (C) White
UNIVERSITY OF LIVERPOOL	D Clarke	Small single.	(S) White (C) Magenta
VOODOO	Tiret (1953)	Large double.	(S) Dark red (C) Dark purple violet
WAVENEY GEM	Burns (1985)	Medium single. Foliage mid-green.	(S) White (C) Pink with flush mauve
WENDY'S BEAUTY	(1993)	Double.	(S) White (C) Lilac
WILMA-VERSLOOT		Single.	(T&S) Rosy-red (C) Purple-red
WILSON'S PEARLS		Semi-double.	(S) Tube and sepals (C) White
YORK MANOR	Sinton (2006)	Single.	(S) Red (C) Purple
ZULU KING	De Graaff (1987)	Single.	(S) Tube & sepals deep carmine (C) Opens nearly black, ages to dark purple

GENERAL VARIETIES

Plant Name	Hybridised By:	Description	Sepals & Corolla
ABBEY HILL	Jim Foster (1999)	Medium single.	(S) Cream blush crepe pink tipped green (C) Dark violet maturing to violet
ABIGAIL	(1988)	Single.	(S) Light rose (C) Purple light base
ADELAIDE HOODLESS	(1998)	Single.	(S) White flushed pink (C) Lilac pink
AINTREE	Need (1964)	Single. Prolific mid green foliage.	(S) White suffused (C) Rose-madder
ALAN AYCKBOURN	Clark (1985)	Single.	(S) White edged deep pink (C) White with pink flush at base
ALAN TITCHMARSH	Weston (1998)	Single.	(S) Rose (C) Pale lilac pink
ALF THORNLEY	Clark (1981)	Double. Medium flowers. Good for show plant.	(S) Neyron rose (C) White
ALISON EWART		Single.	(S) Light carmine on top, deeper mauve flushed pink underneath (C) Mauve flushed pink
ALISON PATRICIA	Johns (1990)	Semi-double. Flowers small and floriferous.	(S) Pale pink (C) Violet with red veining
AMY LYE		Single.	(S) White tipped green (C) Coral orange
ANITA	Gotz (1989)	Single. Good bush or standard. Medium to small flowers.	(S) White (C) Orange
ANN BUCHAN		Single.	(S) Carmine (C) Pale fuchsia purple with deeper edged
ANN HOWARD TRIPP	Clark (1982)	Single to semi-double. Medium flower. Strong and very free flowering. Foliage vigorous.	(S) White edged pink (C) White
ANNABEL	Ryle (1977)	Double.	(S) White flushed pink (C) Creamy white
AUTUMNALE	Unknown	Single. Late flowering. Shiny foliage starts green and yellow, changing to dark red salmon & yellow.	(S) Scarlet rose (C) Purple
AVON GEM		Single.	(S) Red (C) Magenta purple
BABETTE			(S) (C)
BABY BRIGHT	Bright (1993)	Single. Small profuse blooms. Good show variety. Makes good 3" pot.	(S) Upper surface white tipped green, lower phlox pink (C) White blushed pink
BARBARA EVANS		Single.	(S) Purple (C) Deep Purple
BARON DE KETTELER		Large double.	(S) Red (C) Bishops purple
BEALINGS	Goulding (1983)	Double. Free flowering.	(S) Waxy white (C) Violet
BLACK PRINCE	Sattler and Berthga (1893)	Single. Do not over water.	(S) Crimson (C) Very dark purple
BLOOD DONAR	Bielby / Oxtoby (1996)	Double. Multi-Flowering.	(S) Rose (C) Deep red
BLUE MIRAGE	Bellamy (1984)	Double.	(S) White (C) Aster violet
BLUSH OF DAWN	Martin (1962)	Double.	(S) Waxy white (C) Silver grey/lavender

Plant Name	Hybridised By:	Description	Sepals & Corolla
BON ACCORD	(1801)	Single.	(S) White (C) Light pink
BORDER QUEEN	Ryle (1974)	Single. (Bell shaped)	(S) Tube and sepals rhodamine pink (C) Amethyst-violet flushed and veined pink
BORDER REIVER		Medium single.	(S) Vermillion (C) Cardinal red
BRENDA WHITE	R & J Pacey (1986)	Single.	(S) Tube & sepals carmine (C) White veined carmine
BROOKWOOD JOY		Double.	(S) White (C) Blue splashed pink
CAMBRIDGE LOUIE	Napthen (1977)	Medium, single.	(S) Pink orange (C) Rose pink with darker edges
CANNY BOB	Hewitson (1998)	Single. Upward looking flowers.	(S) White (C) Rose pink
CARLA JOHNSTON	Pacey (1986)	Single. Very free. Good standard.	(S) White, tipped green (C) Sea-lavender violet, delicate colouring
CARMEL BLUE		Medium single.	(S) White (C) Blue
CASPAR HAUSER	Springer (1987)	Small double.	(S) Dark red (C) Very dark red – unusual colour
CELIA SMEDLEY	Bellamy (1970)	Single. Vigorous. Good bush or standard.	(S) Neyron rose (C) Currant red
CHANDLERII	Chandler (1839)	Single.	(S) Creamy white (C) Scarlet orange
CHANG	Hazard & Hazard (1946)	Single. Small flowers.	(S) Orange (C) Brilliant orange
CHARLIE GIRL	Charlie Tanfield (1970)	Double.	(S) Rose pink (C) Lilac blue veined rose
CHEADLE FESTIVAL	Roy Horton	Double.	(S) White (C) Blue splashed pink
CHECKER BOARD	Walker & Jones (1948)	Single. Long tube is red. Makes good standard.	(S) Recurved – red & white (C) Red long blooms
CLIFF'S UNIQUE	Gadsby (1974)	Double. Early and prolific.	(S) Waxy white flushed pink with green tip (C) Gentian blue
CLIFF'S OWN	Gadsby (1977)	Single. Ideally suited to 3" pot.	(S) White, pale pink underside, tipped green (C) Hyacinth-blue, shaded delicate violet
CLOVERDALE PEARL	Gadsby (1974)	Single. Self-branching. Makes good standard.	(S) Rhodamine pink tipped green (C) Creamy white
COLETTE KELLY	J Norcross (2007)	Bush.	(S) (C)
CONSTANCE COMER			(S) (C)
COTTA BRIGHT STAR		Medium single.	(S) Indigo lake (C) Bright orange
COUNTESS OF ABERDEEN		Single.	(S) Very pale pink (C) Creamy white flushed pink
CROSBY SOROPTIMIST	D Clark (1989)	Single - very floriferous. Dark green foliage.	(S) Rhodamine-pink (C) Clear white
DANIEL WALTON	J Norcross (2007)	Single.	(S) White with pink veins (C) Lilac blue
DANNY BOY		Double.	(S) Rose (C) Red
DARK LADY	Reynolds (1998)	Single.	(S) Tube and sepals dark red (C) Purple
DARK TREASURE	Hobson (1985)	Double.	(S) Deep pink (C) Deep purple with pink splashes near base
DAWN FANTASIA		Single. Upward looking. Variegated foliage.	(S) Pale pink (C) Pink
DAWN STAR	Bellamy (1985)	Large double.	(S) White tipped green (C) Pale lavender overlaid pink
DAYTIME LIVE	Holmes (1989)	Single.	(S) Cerise (C) Purple pink veined red
DE GROOT VULCAN		Single.	(S) Flush pink (C) Red
DEE COPLEY		Large double.	(S) Bright red (C) Deep purple-red
DELTA'S GROOM	Vreeke- Van T Westeinde (1991)	Single.	(S) Tube and sepals white (C) Light rose
DELTA'S SARAH		Single.	(S) (C)
DOREEN REDFERN		Single.	(S) White (C) Violet
DOROTHY SHIELDS		Double.	(S) White / pink (C) Lilac / pink
DUSKY BEAUTY	Ryle (1981)	Single.	(S) Neyron rose (C) Pale purple edged pink
EL CARMINO	Lee (1955)	Double. Deep green foliage.	(S) Rosy-red (C) White
ELEANOR LEYTHAM	Roe (1975)	Single.	(S) White flushed pink (C) Pink edged deep pink
ELSIE MITCHELL	Ryle (1980)	Medium double.	(S) Tube & sepals pink (C) Sea-lavender
ESTELLE MARIE	Newton (1973)	Single. Upward looking.	(S) White (C) Violet
EUSEBIA	Stubbs (1982)	Double.	(S) Tube and sepals white (C) Red

Plant Name	Hybridised By:	Description	Sepals & Corolla
FASCINATION	Lemoine (1892)	Double.	(S) Rich waxy red (C) Blush pink
FLIRTATION WALTZ	Waltz (1962)	Double. Free flowering. Makes good standard.	(S) Creamy white flushed pink (C) Shell pink
FLORENTINA	Tiret (1960)	Double. Growth lax.	(S) Frosty white (C) Smokey burgundy
FLYING SCOTSMAN	Goulding (1985)	Large double.	(S) Pale pink inside, darker on outside (C) Red with white streaks
FORT ROYAL	Sinton (2004)	Double. Upright.	(S) Magenta (C) Purple
FOUNTAINS ABBEY		Double.	(S) Pinkish white (C) Lavender blue / pink
FRANK SANDFORD		Double.	(S) Light Pink (C) Dark Rose
FRANK SAUNDERS	Dyos (1984)	Single. Small flowers.	(S) White (C) Lilac-Pink
GAY PARASOL	Stubbs (1979)	Double.	(S) Tube and sepals white to flesh pink (C) Burgundy red rosette shaped
GILLIAN ALTHEA		Double.	(S) Rose red (C) Deep lilac splashed rose
GLENBY	Brazier (1972)	Double.	(S) Rose madder streaked with pale pink (C) Amethyst violet fading to petunia purple
GOLD BROCADE		Single.	(S) Red (C) Mauve
GOLDEN DAWN		Single.	(S) Salmon (C) Light orange
GOLDEN WEDDING	Muncaster (1988)	Single.	(S) Rhodamine Pink (C) Purple
GRAND PRIX	Fuchsia La (1972)	Double. Very free. Large foliage.	(S) Porcelain white (C) Delft-rose base shading violet with pink tips
GRUSS AUS DEMBODETHAL	Slater & Belge (1838)	Semi-double.	(S) Tube & sepals crimson (C) Dark purple (almost black)
HALLSALL PRIDE	Sinton (1990)	Medium double.	(S) Tube & sepals red (C) White veined red
HAPPY FELLOW	Waltz (1966)	Single.	(S) Salmon tipped green (C) Orange
HAWAIIAN NIGHT		Double.	(S) White (C) Orchid mauve
HELEN FAHEY	Sinton (2003)	Double.	(S) Deep Red (C) Violet
HERMIENA		Medium single.	(S) White (C) Blackish purple
HESSETT FESTIVAL		Large double.	(S) White (C) Lavender blue/white
HOT COALS		Single.	(S) Deep aubergine (C) Deep aubergine
ICE CAP	Gadsby (1971)	Semi double.	(S) Red (C) White
ICED CHAMPAGNE	Jennings (1968)	Single. Free flowering.	(S) White to pink (C) Shades of rhodamine pink
IGLOO MAID	Holmes (1972)	Large double. Foliage yellowish-green.	(S) White tipped green (C) White slight touch of pink
INDEPENDENCE	Stubbs (1976)	Large double.	(S) White to pink (C) Currant red
JACK SIVERNS			(S) (C)
JAYNE ROWELL		Double.	(S) Pale pink edged rose (C) White veined pink
JENNY SORENSEN		Single.	(S) Rose Bengal (C) Pale Violet Picott Edge
JILL HALLADAY			(S) (C)
JOAN BARNES	Barnes (1988)	Double. Mid green foliage with a red rib.	(S) White with hint of azalea pink, tipped green (C) Crimson red at base
JOAN GILBERT	Gilbert (1977)	Double.	(S) Neyron-rose, green tips (C) Rich violet base
JOAN PACEY			(S) (C)
JOHN GROOMS		Large double.	(S) Pale pink (C) Lavendar
JOHN PULFORD		Medium single.	(S) Creamer white (C) Vermillion
JOY PATMORE	Turner (1961)	Single. Very free easy grower.	(S) White (C) Bright carmine
JOYCE SINTON	Sinton (1990)	Single.	(S) Salmon pink (C) Vermillion red
JUBILEE QUEST	Wilkinson (1998)	Single.	(S) Tube and sepals white with pink flush. (C) Lilac pink with darker picotee edge.
KATHLEEN MUNCASTER	Bielby (1987)	Full double.	(S) Dark rose (C) Rose red
KATRINA THOMPSON	Wilkinson (1992)	Single. Show bench variety.	(S) White suffused pink with green tips (C) White
KILLILY		Single.	(S) (C)
KOLDING PERLE	(1886)	Single.	(S) White (C) Salmon red

Plant Name	Hybridised By:	Description	Sepals & Corolla
LA VIOLETTA			(S) (C)
LADY IN PINK	Sinton (1997)	Double.	(S) Pink (C) Pink
LADY ISOBEL BARNETT	Gadsby (1968)	Single. Prolific. Good flowerer.	(S) Rosy-red (C) Rose purple / imperial purple
LADY KATHLEEN SPENCE	Ryle (1974)	Single.	(S) Amaranth-rose under, whitish-rose top (C) Delicate lavender
LAMBADA	Gotz (1993)	Small single.	(S) Tube and sepals light pink (C) Violet purple with pink flush
LANCASHIRE LASS	Sinton (1986)	Medium single.	(S) White splashed red (C) Hyacinth Blue
LAURA	Unknown	Single. Vigorous grower. Good standard.	(S) Light orange (C) Reddish orange
LENA DALTON	Reimers (1953)	Double.	(S) Pale pink (C) Crispy blue / mauve
LEONORA	Tiret (1960)	Single. Bell shaped flowers. Vigorous, makes good standard.	(S) Soft pink self (C) Soft pink self
LESLEY ANN SMYTH		Single.	(S) (C)
LILAC LUSTRE		Double.	(S) Rose red (C) Powder blue/lilac
LILLIAN ANNETTS	D Clarke	Medium double.	(S) Waxy white (C) Bluish Lavender
LINDA GRACE	Wilkinson (1996)	Single. Short white tube. Makes good hanging pot.	(S) White flushed pink, tipped green (C) Very pale lilac with mauve edge
LINLITHGLOW LASS			(S) Pink tipped green (C) Blue, pink at base
LISA ROWE	D Clark (1998)	Double.	(S) Pink suffused white, tipped green (C) Dark blue petals with petaloids. Blue fused pink with red veins
LORD LONSDALE	Unknown	Large single, foliage crinkly. Good standard.	(S) Light apricot (C) Orange-peach
LOVES REWARD	Bambridge (1986)	Single. Medium flowers. Short jointed compact bush. Excellent show variety.	(S) White (C) Violet-blue
LYE'S UNIQUE	Lye (1886)	Single. Very free and strong.	(S) Waxy white (C) Salmon-orange
LYNN ELLEN		Double.	(S) Deep rose pink (C) Rose purple
MAJOR HEAPHY		Single. Very free small flowers.	(S) Brick red tipped green (C) Reddish scarlet
MALIBU MIST	Stubbs (1985)	Double lax bush.	(S) White, upper white tinged pink reverse (C) Violet blue streaked light pink maturing to cyclamen purple & white
MARCUS GRAHAM	Stubbs (1985)	Large double.	(S) Flesh pink (C) Dusty pink streaked orange
MARCUS HANTON	Clark (1986)	Double.	(S) Rich red (C) Rich lilac-blue, splashed cerise
MARGARET PILKINGTON	Clark (1994)	Single. Free flowering.	(S) White veined rose (C) Bishops violet
MARGARET ROE		Single.	(S) Rosy red (C) Pale violet
MARIA LANDY	Wilkinson (1991)	Small single. Good for show bench.	(S) Tube & sepals pale pink (C) Pale violet maturing to rose pink
MARILYN OLSEN	Wilkinson (1987)	Single. Small and compact growth.	(S) Rose pink including tube (C) White
MARIN GLOW	Reedstrom (1954)	Medium single. Good share flower. Easy to grow.	(S) Pure waxy-white (C) Imperial rich purple, fading to magenta
MARY POPPINS		Single.	(S) Pale apricot (C) Orange vermillion
MAY CLARK	D Clark		(S) (C)
MEMPHIS BELLE	Sinton (1992)	Double. Upright.	(S) Rose (C) Light Purple
MERLIN	(1982)	Single.	(S) Red (C) Deep Purple
MICKY GOULT	Roe 1981	Single. Early and free flowering.	(S) White on top, very pale pink underneath (C) Mallow purple
MIDAS	Sinton (1995)	Single. Foliage yellow.	(S) Rose (C) Purple
MINI ROSE	De Graaff (1983)	Single.	(T) White / red blush (S) White at base / red blush (C) Light red / purple
MISS CALIFORNIA	Hodges (1950)	Semi double.	(S) Pink (C) White
MOOD INDIGO	De Graaff (1987)	Single.	(S) Green (C) Purple
MRS LOVELL SWISHER	Evans and Reeves (1942)	Small single, easy grower.	(S) Pinkish-white tipped green. Deeper pink underneath (C) Deep rose
MRS MARSHALL	Jones (1862)	Single.	(S) Creamy white (C) Rose cerise
MRS W RUNDLE	Rundle (1896)	Single.	(S) Pale rose (C) Orange vermillion
MYRA BAXENDALE	Porter	Double. Foliage light olive with red veins.	(S) Red (C) Blush purple

Plant Name	Hybridised By:	Description	Sepals & Corolla
NANCY LOU	Stubbs (1971)	Large double. Makes a good standard.	(S) Pink (C) White
NATTY NOODLE	J Norcross (2006)	Single.	(S) Pale rose with green tip (C) Cardinal blue
NELLIE NUTTALL	Roe (1977)	Single. Compact growth.	(S) Red (C) White
NEW MILLENIUM			(S) (C)
NICE N EASY	Sinton (1988)	Medium double.	(S) Red (C) White
NICHOLAS HUGHES		Single. Medium flower.	(S) Pink (C) Cream
NICKI'S FINDLING	Ermel (1985)	Medium single.	(S) Rose (C) Orange red
NICOLA CLAIRE	Holding (1988)	Large double.	(S) Light pink – deeper underside (C) Dark red
ORANGE CRUSH	Handley (1972)	Medium single.	(S) Orange-salmon (C) Bright orange, paler at base
OTHER FELLOW	Hazard & Hazard (1946)	Single small flowers. Very prolific and dainty.	(S) Waxy white tipped green (C) Coral pink, white at base
PACQUESA	Clyne (1974)	Medium single.	(S) Deep red sepals and tube (C) White veined red
PARTY GIRL	Sinton (2006)	Double.	(S) Pink (C) Lilac
PATIO PRINCESS	Sinton (1988)	Double. Good standard.	(S) Neyron rose (C) White faintly veined rose
PATRICIA HODGE		Single.	(S) Red (C) White
PATTIE SUE	Sinton (1995)	Double. Upright.	(S) Pink (C) Pink
PAULA JANE	Tite (1973)	Medium semi-double.	(S) Pink with green tips (C) Beetroot purple
PENNINE	Mitchinson (1981)	Single.	(S) White slightly marked red (C) Dark violet blue
PEPPERMINT STICK	Walker & Jones (1950)	Double. Good standard.	(S) Carmine with distinct white stripe running down middle (C) Centre petals, rich royal purple outer. Petals light carmine rose / purple edge
PERRY PARK	Handley (1977)	Double.	(S) Pale pink (C) Rose
PINK FAIRY	Waltz (1954)	Large double.	(S) Pale rose (C) Clear pink
PINK FANTASIA	Webb (1989)	Single. Upward looking.	(S) White blushed pink (C) Dark purple veined pink with white base
PINK FASCINATION VARIEGATED		Single. Upright.	(S) Cerise pink (C) Violet
PINK JADE	(1958)	Single	(S) Pink tipped green (C) Orchid pink edged rose
PINK SPANGLES		Single.	(S) Red (C) Pink
PINK SURPRISE	Jackson (1994)	Single.	(S) Rich red (C) Shell pink
PINK TEMPTATION	Porter	Single.	(S) Pink / white (C) Rose
PRESIDENT GEORGE BARTLETT	Bielby / Oxtoby (1997)	Semi-double.	(S) Tube and sepals dark red (C) Dark purple ageing to dark ruby
PRESIDENT KEN ROBB			(S) (C)
PRESIDENT NORMAN HOBBS		Single.	(S) Pale salmon (C) Deep orange red
PRINCESS MIA	R Barns (2001)	Single.	(S) Pale pink recurring (C) Pale lavender
PURPER KLOKJE	De Graaff (1989)	Single.	(S) Reddish aubergine (C) Very dark aubergine
PURPLE PATCH	Sinton (1995)	Single.	(S) Crimson including tube (C) Very dark purple
RAF	Garson (1942)	Double. Growth lax.	(S) Bright red (C) Rose pink splashed and veined cerise
RASPBERRY	Tiret (1959)	Large double. (Heat tolerant)	(S) Tube & sepals pinkish white (C) Raspberry-rose
REBECCA WILLIAMSON		Double.	(S) Pink (C) Salmon red
RED ROVER	Hazard	Leaves variegated, yellowish green.	(T&S) Bright crimson (C) Violet, trumpet shaped
ROMANY ROSE	Hilton (1984)	Single.	(S) Phlox pink (C) Neyron rose
RON CHAMBERS			(S) (C)
ROSE FANTASIA	Wilkinson (1993)	Single. Sport from Pink Fantasia.	(S) Bright rose (C) Pale rose with red veins
ROSE MARIE			(S) Pink (C) Lighter Pink
ROSE WINSTON		Medium double.	(S) Rose (C) Rose
ROYAL VELVET	Waltz (1962)	Large double.	(S) Red (C) Rich purple

Plant Name	Hybridised By:	Description	Sepals & Corolla
RUTH NORCROSS	J Norcross	Single.	(S) Salmon pink with green tips (C) Dark lilac maturing to deep pink
SACRAMENTO	Reiter (1946)	Single. Upright.	(S) Light carmine (C) Light carmine
SANTA LUCIA			(S) Deep red (C) Orchid pink, rose veins
SARAH LOUISE		Single.	(S) Rose with light tips (C) Violet veined scarlet
SARAH WALTON	J Norcross (2007)	Single.	(S) Light rose pink with green tips (C) Pink at base to dark lilac
SATELLITE	Kennett (1965)	Large single.	(S) White carmine edge (C) Dark red streaked white
SATURNUS	(1970)	Single.	(S) Crimson (C) Purple
SCARBOROUGH SEASPRITE	Clarke (1989)	Semi double.	(S) Scarlet (C) Purple veined scarlet
SHANGUINIA		Single.	(S) Deep red (C) Rich purple
SHEILA CROOKS		Double.	(S) Bright red including tube (C) Bluish purple
SHELFORD	Roe (1986)	Single, very prolific. Good standard.	(S) Baby pink shading to white, tipped green (C) White with slight pink veining at base
SHRIMP COCKTAIL		Single.	(S) Pink (C) Pink with white stripes
SILVER DOLLAR		Single.	(S) White (C) White
SLEIGH BELLS	Schnabel (1954)	Single. Largish blooms.	(S) White (C) White
SMOULDERING SUMMER		Single.	(S) Pink (C) Dark Pink
SOPHIE LOUISE		Single.	(S) White flushed red (C) Deep purple
SOROPTOMIST INTERNATIONAL		Single.	(S) Waxy White (C) Deep pink
STAR CHASER		Single. Upward looking.	(S) (C)
STRAWBERRY DELIGHT	Gadsby (1970)	Double. Foliage variegated.	(S) Crimson (C) White veined pink
STRING OF PEARLS	Pacey (1976)	Single to Semi-Double.	(S) Pale china rose (C) Pale rose purple with lavender veins
SUE	Holmes (1986)	Single bush variety.	(S) Cerise (C) Cerise and Orange
SUMMERWOOD	Sinton (1996)	Double.	(S) Red (C) Orange
SUNRAY	Milne (1872)	Single. Mainly grown for the tri-coloured foliage - Green/Cream suffused cerise. Needs plenty full sun.	(S) Cerise / Purple (C) Cerise / Purple
SUPERSPORT	Unknown	Double.	(S) Red (C) White veined red
SUSAN FORD	Clyne (1972)	Double.	(S) Neyron rose (C) Imperial purple
SWANLEY GEM	Cannell (1901)	Single.	(S) Rich red (C) Violet veined scarlet
TAMWORTH	Handley (1976)	Single.	(S) White tipped green (C) White
TELSTAR	Jones (1960)	Single. Upright.	(S) White (C) Cobalt Violet
TEQUILA SUNRISE	(1968)	Single.	(S) Dark Pink (C) Salmon
THAMAR	Springer (1987)	Single. Small flowers.	(S) White (C) Cyclamen purple
THE A-TEAM	J Norcross (2007)	Single. Named for Radio Merseyside.	(S) Waxy white with green tips (C) Rose magenta
TORVILLE & DEAN	Pacey (1985)	Free flowering, double.	(S) Tube and sepals pale cerise (C) White veined cerise
TRENTHAM BELL		Single.	(S) Light rose (C) Violet mature-rose
TURKISH DELIGHT	Sinton (2002)	Single. Upright.	(S) Rose (C) Purple
TUTU	Reiter (1952)	Double.	(S) Tube and sepals greenish white. (C) Pale rhodamine-purple flecked pale -violet
TWINNY	Gordon (1998)	Small single.	(S) Tube and sepals pink (C) White
U.F.O	Handley (1972)	Single.	(T&S) White (sepals fold back) (C) Lavender
UNIVERSITY OF LIVERPOOL		Single.	(S) White (C) Rose Red
UPWARD LOOK		Single. Upward looking.	(S) (C)
VIOLET GEM	Lockyer (1978)	Single.	(T&S) Red (C) Purple to magenta
VIVIENNE THOMPSON		Single.	(S) Light pink (C) White
WALTZ JUBELTEEN	Waldenmaier (1991)	Single. Blooms are held upright. Popular show plant.	(S) Very pale pink with green tips (C) Rose with darker rose edges

Plant Name	Hybridised By:	Description	Sepals & Corolla
WALTZING MATILDA		Large double.	(S) Light pink on upper surface. Pink lower-recurved tips. (C) Opens pale pink maturing to pink veined rose
WENDY HARRIS	Harris (1978)	Large double. Makes good standard.	(S) Tube & sepals neyron rose (C) White, veined neyron rose
WHITE KNIGHTS CHEEKY		Single.	(S) Tyrian purple (C) Very small dark Tyrian purple
WHITE QUEEN	Doyle (1899)	Medium single.	(S) White (C) Coral-orange
WIGAN PEER	Clark	Double.	(S) White (C) Palest pink
WINGROVE'S MAMMOTH	Wingrove (1968)	Double large flowers.	(S) Turkey-red (C) White heavily veined and splashed carmine
WINSTON CHURCHILL	Garson (1942)	Medium double.	(S) Pink tipped green (C) Lavender blue maturing to pale purple
XMAS TREE		Single.	(S) Rose / smokey (C) Blue - Rose